

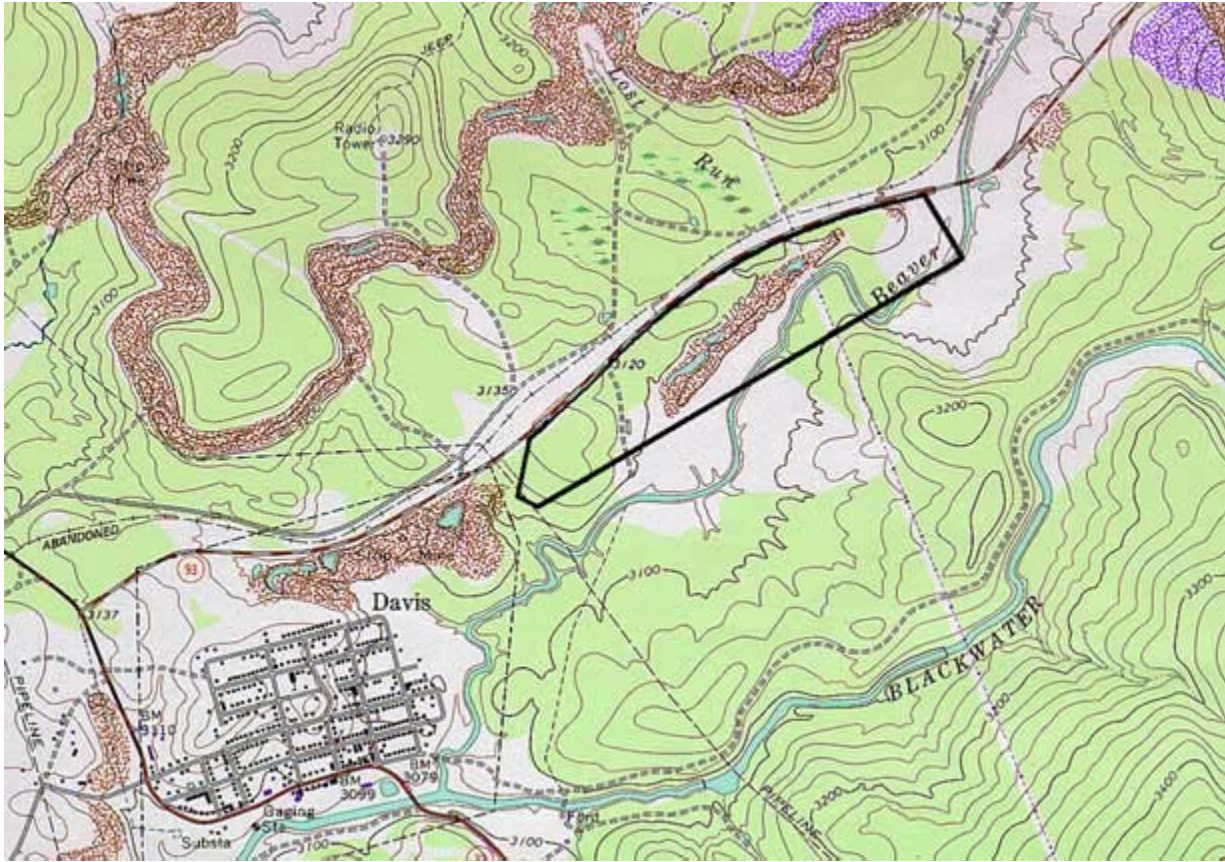
TUCKER COUNTY INDUSTRIAL PARK

Davis, West Virginia



Location

City :	Davis
County :	Tucker
Miles To Nearest Interstate Or 4 Lane Highway:	39.0
Miles To Nearest Commercial Airport:	67.0
Rail Access :	None
Navigable Waterways:	None



Size and Utilities

Total Park Acreage :	161.51
Available Acreage :	161.51
Contiguous Acreage :	161.51
Electric :	Allegheny Power
Water :	Davis PSD
Gas :	Canaan Valley Gas
Sewer :	Davis PSD

Contact Information

Name :	Lisa Sharp, Executive Director
Company :	Tucker County Economic Development Authority
Address :	215 First Street Parsons, WV 26287
Phone :	(304) 478-3454
Fax :	(304) 478-2446
Email :	sharp595@comcast.net